



# FLAT TRACK

BY LEATHERNECK HARDWARE



---

Hotels | Office Space | Baths | Barns | Restaurants | Galleries | Lofts | Kitchens  
Rustic Homes | Closets | Recessed Storage



**FLAT TRACK**  
BY LEATHERNECK HARDWARE

MADE IN  
  
U. S. A.

Flat Track Hardware by Leatherneck Hardware styling dates back to the turn of the century when it was used for barn doors, warehouses and in industrial settings. Today the award-winning hardware, with its unique look and versatile finishes, is perfect for many space-saving interior and exterior applications.

We personally design and manufacture all of our hardware and specialize in custom projects. Whether new construction, repurpose, remodel, repair or retrofit, we have over 40 years of creative solutions for any door hardware project.

Our sliding hardware has been featured everywhere from HGTV to The Ellen Show, but what means the most to us is hearing that our hardware was even better than our customers expected. They tell us the difference is in our quality – materials, craftsmanship and experienced service.

***“What I like is the form follows the function. The beauty lies in the raw simplicity.”***

***- Cavin Costello,  
Chief Designer, The Ranch Mine***

- Interior and Exterior Applications
- Commercial and Residential
- Smooth and Solid Operation
- Highest Quality and Workmanship
- Space Saving
- Capacities 400 lb and 800 lb Units
- Complete Kits or Individual Components
- Single Slide and Bi-parting Openings

## Custom Solutions

We excel at designing customized solutions in partnership with our customers. No matter the design idea or challenge, our team of innovators can develop a sliding hardware answer that makes every space unique and functional.



### Design

The hardware is available in clean, simple styling or can be reimagined to fit any application perfectly.

### Finishes

The hardware is available in many standard finishes. Don't see what you want? Our team continues to develop show-stopping finishes in every painted color on the spectrum, a variety of textures and our new graphics applications.

### Applications

Custom track lengths and unique design ideas help our customers save space in the most unconventional places.

# Hangers

400 lb Door Track  
142 Series Hanger Styles



401 Arrowhead



402 Straight



403 Horseshoe



403 DBHH  
Double Bar Horseshoe



407 Top Mount



409 I-Shape



410 Teardrop



411 Wide Teardrop



413 Swivel

# Hangers

800 lb Door Track  
144 Series Hanger Styles



404 Teardrop



405 Straight



406 Industrial  
Wide Tear Drop



142 series hanger is 11" in length

144 series hanger is 21" in length

# Track

*Two sizes to fit all needs*

142 series for doors up to 400 lbs

144 series for doors up to 800 lbs

# Finishes



00 Flat Black



25 Unfinished



27 Clear Coated



30 Machine Polished



40 Mill Finish  
Stainless Steel



50 Brushed  
Stainless Steel



60 Weathered Rust



80 Painted Bronze



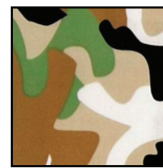
90 Brushed Nickel  
Finish

# Graphics Series

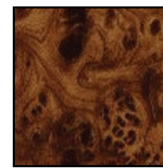
In addition to our standard finishes, we offer a unique line of Graphics Finish options. The Delrin hanger wheels, hanger pin, track mounting screws, anti-jumps and hanger fasteners are in black.

## HydroGraphics

- Matte finish
- Unique images
- Liquid transformation process



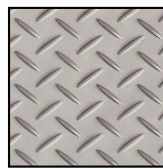
Army Camo



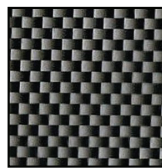
Knurl Wood



Walnut



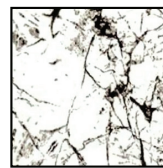
Diamond Plate



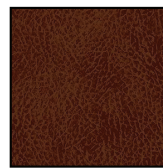
Carbon Fiber



Light Wood Grain



White Marble



Leather



Fish Camo

## PhotoSTEEL™

- Powder coat imaging
- Durable, gloss finish
- Economical



Cow Hide



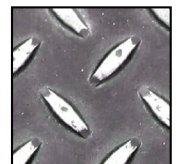
Bronzie



Concrete Cracked



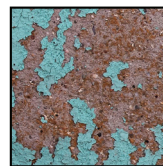
Dark Brick



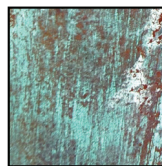
Diamond Plate



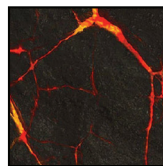
Fire



Flaked Paint



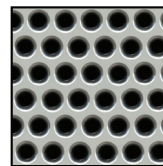
Hawaii Patina



Hot Lava



Kid Bricks



Metal Holes



Wood Planks

# Wheels

All of our wheels are precisely machined and feature two, sealed ball bearings that are lifetime lubricated. Wheels come in 3" Standard and 2 1/2" Low Profile (for use with 402 and 407 Low Profile hangers.) Choose from Standard Steel Wheel or Quiet Wheel (made from durable polymer.) Wheels not sold separately.



3" Standard Steel Wheel and 2-1/2" Low Profile Steel Wheel



3" Quiet Wheel Made from a durable polymer material

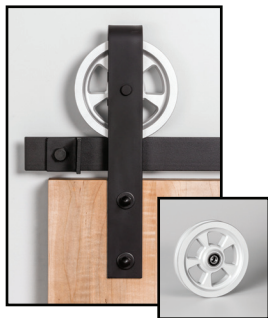
## Standard Steel Wheel



## Low Profile Wheel



# Aluminum Spoke Wheels 402S Series



5-Spoke



10-Spoke



Bullet



Gear Head



Mark II



Six Shooter



Texas Star

The aluminum spoke wheel is a highly stylized 6" wheel to enhance the design of your Flat Track system. This wheel style is interchangeable with many of the 142 standard and designer series hangers. Wheels may also be painted.



## Accessories



Track Mounting Screws for #142 Track  
(0316-0046)

One per spacer. 3 1/2", 4 1/2", and 6" lengths. Available in Black Oxide, Zinc Oxide and Stainless.



Close-Ease  
(0119-0092)

Soft-closing mechanism to close doors silently and smoothly. The mechanism, concealed behind the track, catches the activator for gentle, even closing. Door weight capacity of 150 lbs. Recommend 2 per door. Factory or customer installed. (Pictured from rear view)



Cast Iron Raised Bow Handle  
(0117-0054)  
Available in all finishes except  
Brushed Nickel and Stainless.



Cast Iron Lower Profile  
Bow Handle  
(C95-606)  
Black Only.



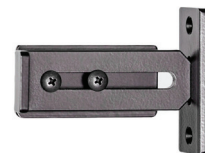
Cast Iron Flush Pull Handle  
(0117-0099)  
Available in all finishes  
except Stainless.



Stainless Steel Flush  
Pull Handle  
(C95-612)



Strap Handle  
(0120-0076 )  
Available in all finishes except  
Stainless and Weathered Rust.



Privi-Loc  
(0119-7019)  
Sliding door locking system  
with safety opening feature.  
Jamb mounted. All finishes  
available except MP-109  
and Weathered Rust.





Slide Stop  
(0120-0079)

Easy-to-use stop, designed to guarantee your door stops exactly where you need it to. Available in all finishes.



Reversible Adjustable Stop  
(0120-0029)

Adjusts for up to one full inch of movement and can be rotated for more range. Available in all finishes.



Door Stop with Cushion  
for #142 Track  
(0117-0041)

Fixed on the end hole. Track mounted, sturdy stop with cushion to quiet the close. Available in all finishes.



Adjustable Spacers

Available In:

Black Oxide

Small 1020-0077

Large 0120-0084

Zinc

Small 0120-2777

Large 0120-2784

Two sizes. Small - 1 1/8" to 1 3/8" allows for 3/4" of adjustment. Large - 1 3/4" to 3" allows for 1 1/4" of adjustment.



Spacer for #142 Track  
(0115-0020)

Flange against wall and behind track. Available in different sizes and in colors similar to standard finishes.



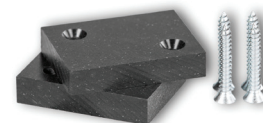
Splice Plate for #142 Track  
(0115-0021)

Bracket used to hold two ends of track together for precise alignment.



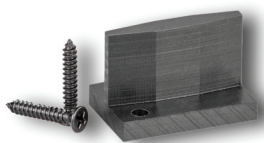
Bi-Pass Bracket with Hardware  
(0120-0026)

Hardware for doors that pass in front of each other. Works for doors up to 1 3/4" thick. One bracket per mounting hole. Available in all finishes.



Anti-Jump Block for #142 Track  
(0115-0033)

Fixed on top of door to keep door on track. Black only.



Bottom (FIN) Guide  
(0119-0082)

Bottom floor guide to secure door. Floor mounted. Black only.



Cradle Guide  
(0120-0096)

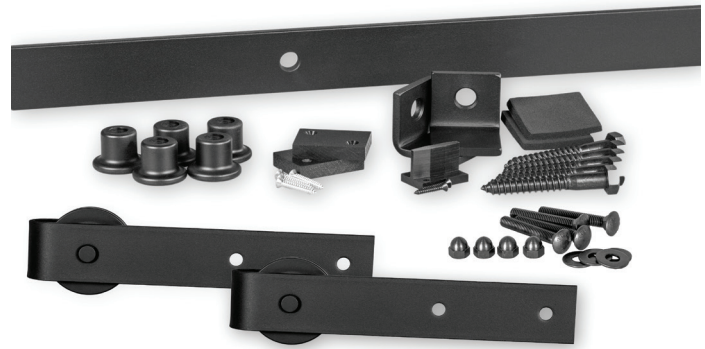
Designed to remove the need to mortise cut along the bottom of the door. Cradles the bottom of the door for vertical wall alignment. Black only.

# Retail Kits

Flat Track by Leatherneck Hardware is available in easy-to-use kits. The kits include all components needed for a standard size, single-slide door opening.

In-Stock Kits available in 402 style hangers, Black or Brushed Nickel Finishes, with track lengths: 5 ft | 6 ft | 7 ft | 8 ft

We also offer unique custom options that feature all of our hanger styles, finishes and track lengths – including bi-parting and bi-passing selections.



## Retail Track and Component Kit Includes:

- 2 Flat Track Hangers with Mounting Hardware
- 1 Flat Track with 4-7 Spacers and Track Mounting Screws  
*(quantity varies by size of track)*
- 2 Door Stops with Cushions
- 2 Anti-Jump Blocks
- 1 Bottom Fin Guide
- Easy-To-Follow Instructions

*Bi-parting openings require multiple kits and splice plate. Door openings wider than the specified kit width may require multiple tracks and splice plate.*

# Designer Series

Our fastest growing line - Flat Track by Leatherneck Hardware - just got more interesting with the Designer Hardware Series. With styling to fit unique spaces, you can still count on our distinctive quality, superior materials and long-time craftsmanship. Constructed from laser-cut steel and available in all of Leatherneck's unique and durable finishes. Many of the hangers are interchangeable with our standard 402 hardware style. (*\*Hangers interchangeable with 402 hardware style.*)



415 Flat Top\*



416 T-Top



417 Cornered



418 Mourning Star\*



419 Fleur-de-lis\*



420 Ranger\*



421 Fireball\*



422 Sprocket\*



423 Vined\*



424 Wrought Iron\*

Leatherneck Hardware Inc. has been a family owned and operated business since 1977. From the beginning, our goal has been to continually improve the design and manufacture of sliding hardware. We have grown from a small component supplier to the highly specialized company we are today.

Our lines of hardware include award-winning solutions for Aircraft Hangar Doors, Heavy-Duty Industrial Sliding and Rolling Doors, Flat Track by Leatherneck Hardware, and the stylized line of Coburn Sliding Systems.

# FLAT TRACK

BY LEATHERNECK HARDWARE



Leatherneck Hardware, Inc.

P.O. Box 1142, Danville, Illinois 61834

888.442.4572 • 217.442.4572 phone • 217.442.3613 fax

info@doorhdwe.com • www.doorhdwe.com