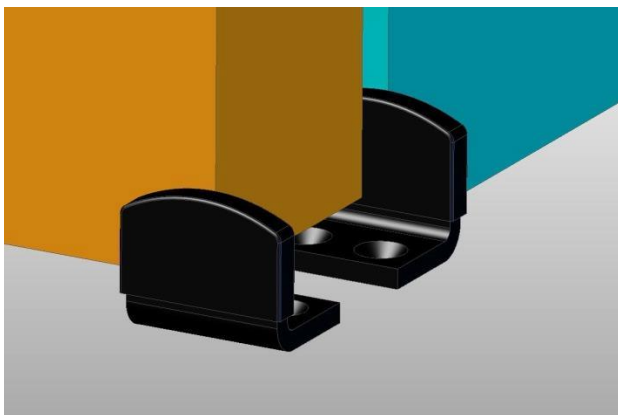


# FLAT TRACK

BY LEATHERNECK HARDWARE

## Cradle Guide Installation

1. At the jam opening place each side of the guide so that it will “cradle” the door (as shown below) and keep the door in a straight/vertical position.
2. Locate the guide so that when the door is in the open or closed position, the guide will still be in close contact with the door and half way sticking out into the opening.
3. Mark the inside of each guide hole onto the floor. (Use as a drilling reference)
4. Drill the floor holes according to the type of fastener required specific to your floor type. This guide requires 4 each maximum #8 fasteners.



5. Once you have drilled the floor for the guide, then simply secure the pieces down with the fasteners and you're done!

